

# Installing SPROG Drivers on Windows 8/8.1/10

Updated 19<sup>th</sup> June 2016

We advise you read through these instructions and then print the pages relevant to your SPROG and operating system version for reference, or view them on another device, whilst performing the installation.

The drivers included on the CD-ROM may be used with Windows 8/8.1/10 but, as they are unsigned, you may need to disable driver signature enforcement. This is not recommended by Microsoft but is required if you wish to use your SPROG with Windows 8/8.1/10.

Tablet users will need to connect an external keyboard to be able to complete all of the steps.

These steps are only required when the drivers are first installed. Subsequent use of the SPROG will load the drivers correctly.

## Do You Need to Disable Driver Signature Enforcement?

From the table below, determine whether you need to disable driver signature enforcement.

	Win 8/8.1	Win 10
<b>SPROG II</b>	<b>Yes</b>	<b>Yes</b>
<b>SPROG IIv3</b>	<b>Yes</b>	<b>No</b>
<b>SPROG 3</b>	<b>Yes</b>	<b>No</b>

If you do need to disable driver signature enforcement, skip to the section relevant to your operating system.

## Section 1 Disable Driver Signature Enforcement

### Windows 8

Instructions in this section are common to all versions of SPROG hardware.

Press Windows Key + i on your keyboard to access the settings charm and select "Change PC Settings".

Select "General" in the left hand list then scroll the right hand pane down until you can see "Advanced Startup" and click "Restart Now".

When Windows restarts click "Troubleshoot".

Click "Advanced Options".

Click “Startup Settings”

Click “Restart”. Windows will restarts into the Startup Settings menu.

Press 7 on your keyboard to “Disable Driver Signature Enforcement”

Your PC will reboot and you can now install the drivers. Skip to section 2.

## **Windows 8.1**

Instructions in this section are common to all versions of SPROG hardware.

For an illustrated guide see <http://www.howtogeek.com/167723/how-to-disable-driver-signature-verification-on-64-bit-windows-8.1-so-that-you-can-install-unsigned-drivers/>

Press Windows Key + i on your keyboard to access the settings charm and select “Change PC Settings” at the bottom right:

Select “Update & Recovery” in the left hand list:

Select “Recovery” in the left hand list:

then select “Restart Now” under “Advanced Startup”

When Windows restarts click “Troubleshoot”:

Click “Advanced options”

Click “Startup Settings”:

Click “Restart”:

When Windows restarts, press 7 (or F7) on your keyboard to “Disable Driver Signature Enforcement”

Your PC will reboot and you can now install the drivers.

## **Windows 10**

Disabling driver signature enforcement on Windows 10 is only required for old SPROG II devices. This step is not required for SPROG IIv3, nor SPROG 3.

For an illustrated guide, see <http://www.howtogeek.com/167723/how-to-disable-driver-signature-verification-on-64-bit-windows-8.1-so-that-you-can-install-unsigned-drivers/>

Click the Windows start button at the bottom left of the screen.

Click "Power".

Hold down the shift key and click "Restart".

Click "Troubleshoot".

Click "Advanced options".

Click "Startup settings".

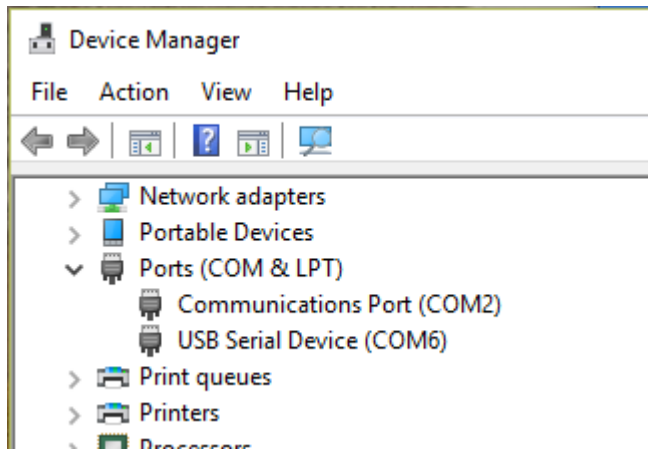
Click "Restart":

When Windows restarts, press 7 (or F7) on your keyboard to "Disable driver signature enforcement"

Your PC will reboot and you can now install the drivers.

## Section 2 Installing the Drivers

SPROG Ilv3 and SPROG 3 do not require any drivers to be installed on Windows 10. Windows's own generic USB serial drivers will be installed automatically and the SPROG will appear as a USB Serial Device in Device Manager:

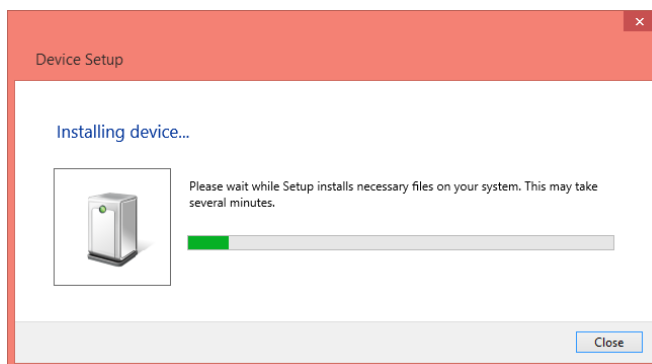


For all other combinations, read on...

This example shows the installation of a SPROG 3. Installation of SPROG Ilv3 drivers is very similar.

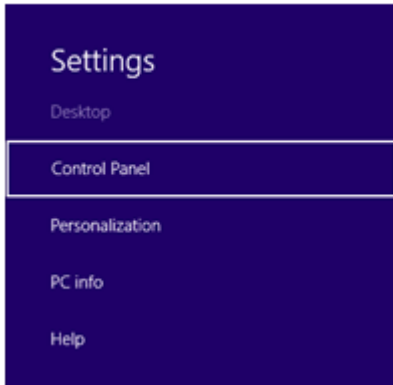
Connect the SPROG to the PC via USB and to the power supply. Turn on the power.

Cancel the Device Setup if it appears. It may appear minimised in the task bar. Maximise it and cancel with the X in the top right corner:

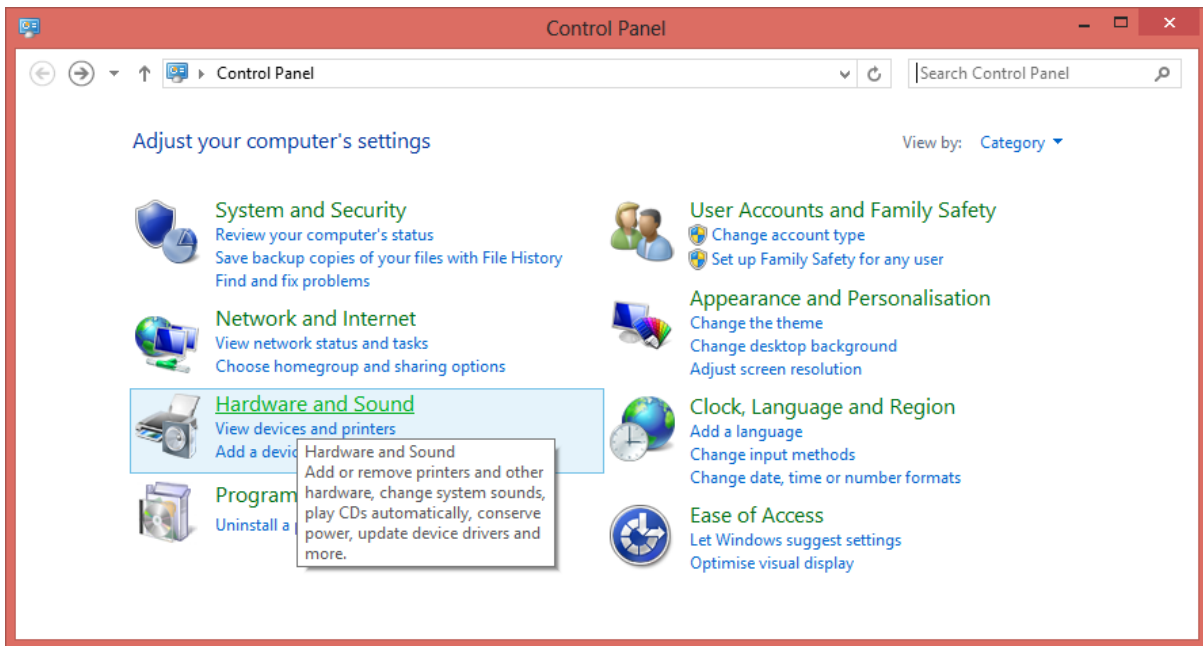


### Open Device Manager (Windows 8/8.1)

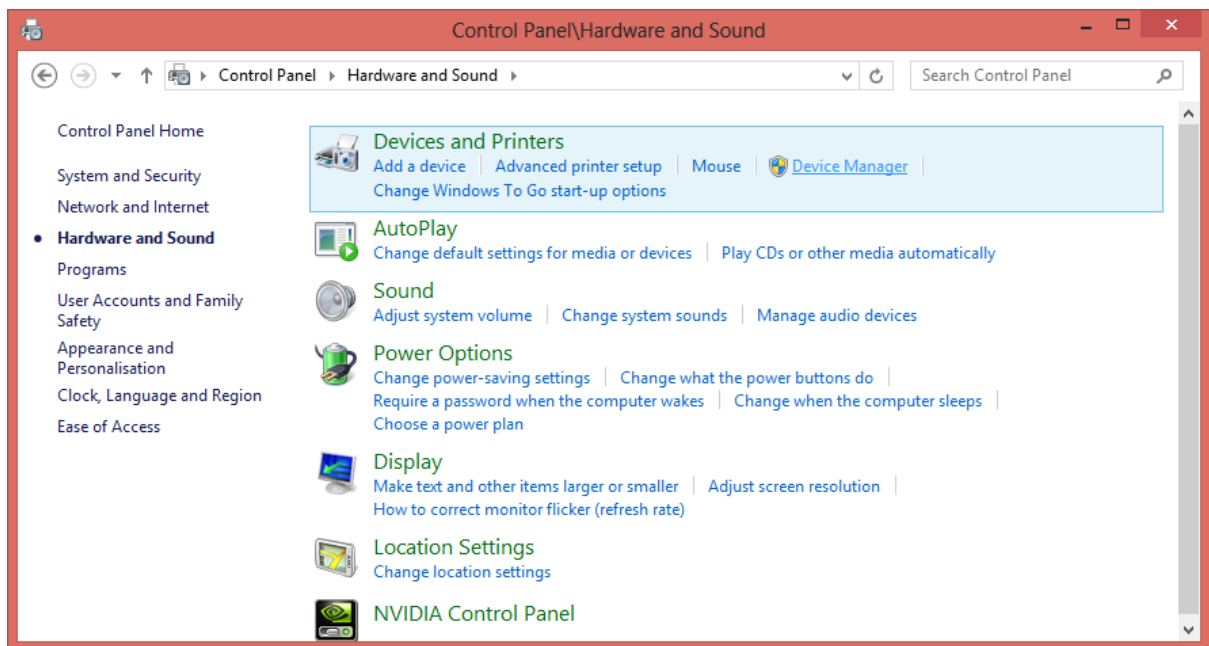
On Windows 8/8.1, Press Windows Key + I on your keyboard to access the settings charm and select "Control Panel" at the top right:



Select "Hardware and Sound":



Select "Device Manager" in "Devices and Printers":



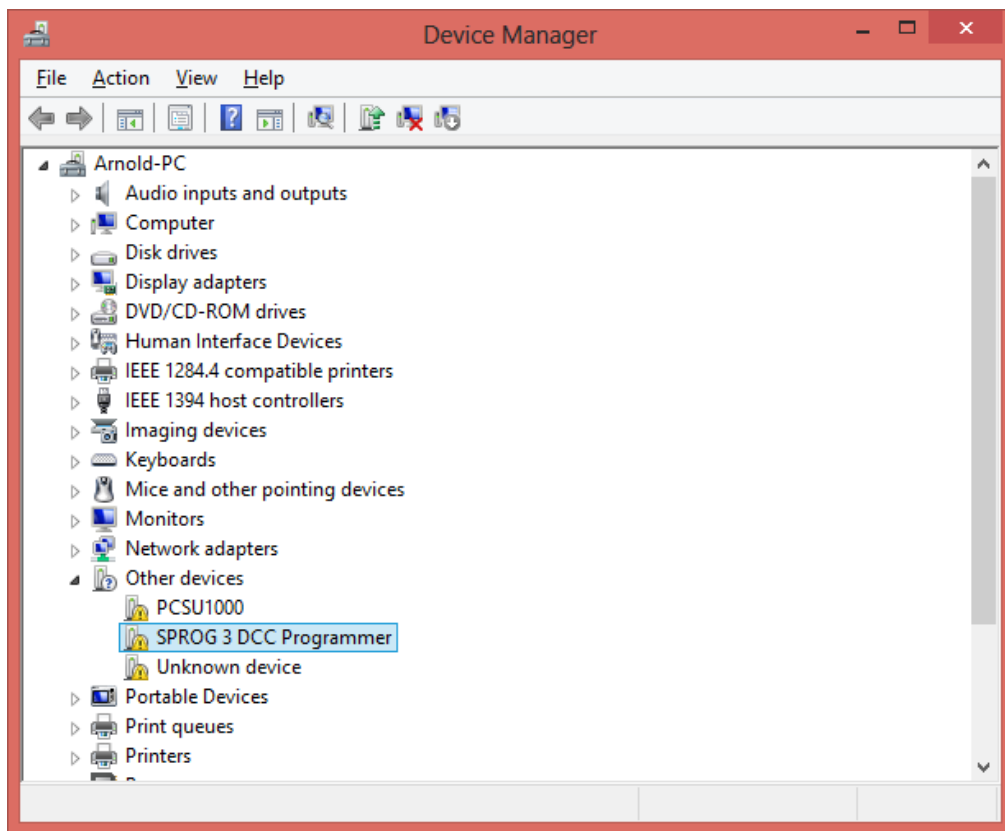
## Open Device Manager (Windows 10)

On Windows 10, Press Windows Key + I on your keyboard and select "Devices". Scroll to the bottom of the page and select "Device manager" under "Related settings"

For previous generation SPROG II (i.e. not SPROG IIv3) skip to section 4

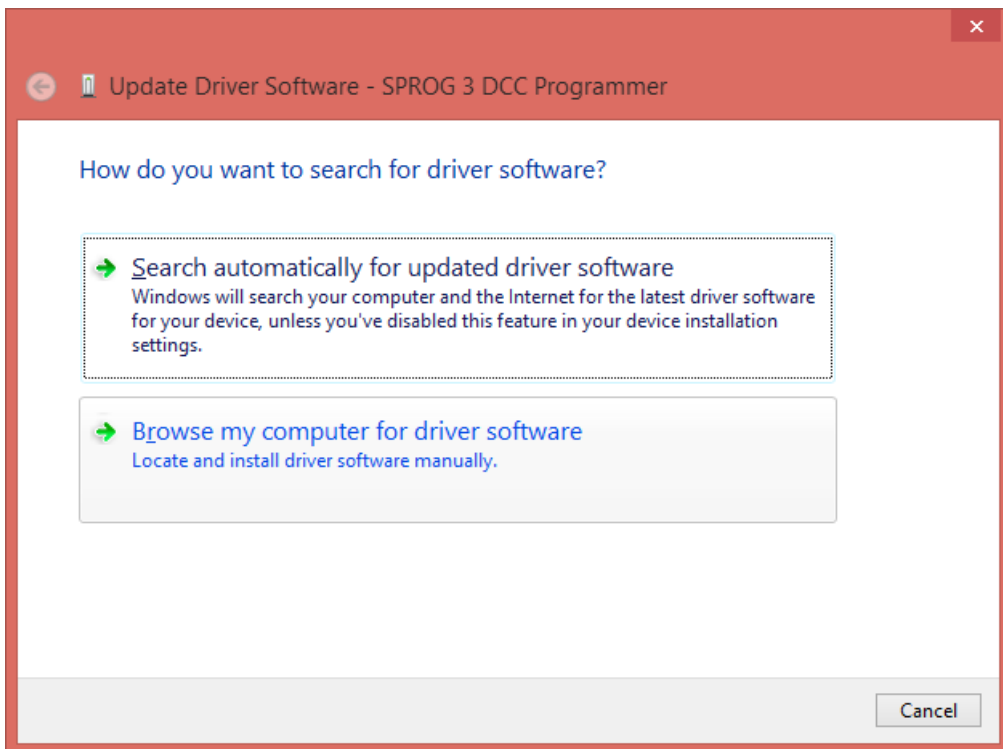
### Section 3 Current Generation SPROG Ilv3 and SPROG 3

Open “Other Devices” and you will see the SPROG listed with a yellow exclamation mark:

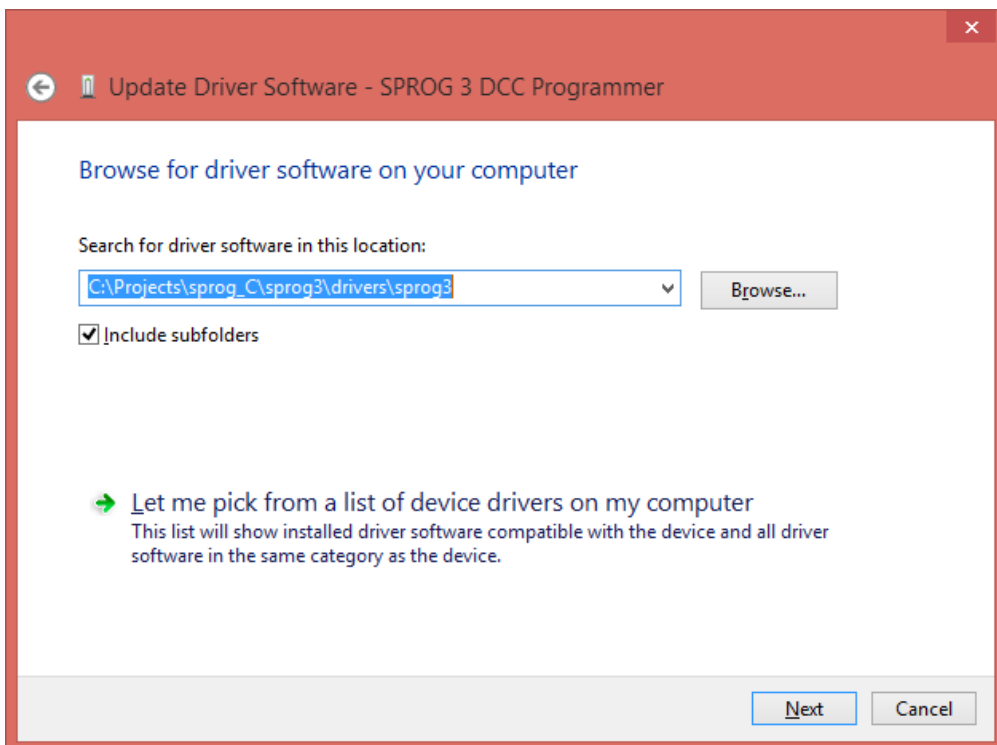


Click the SPROG device with the right mouse key and select “Update Driver Software...”.

Select "Browse my computer...".

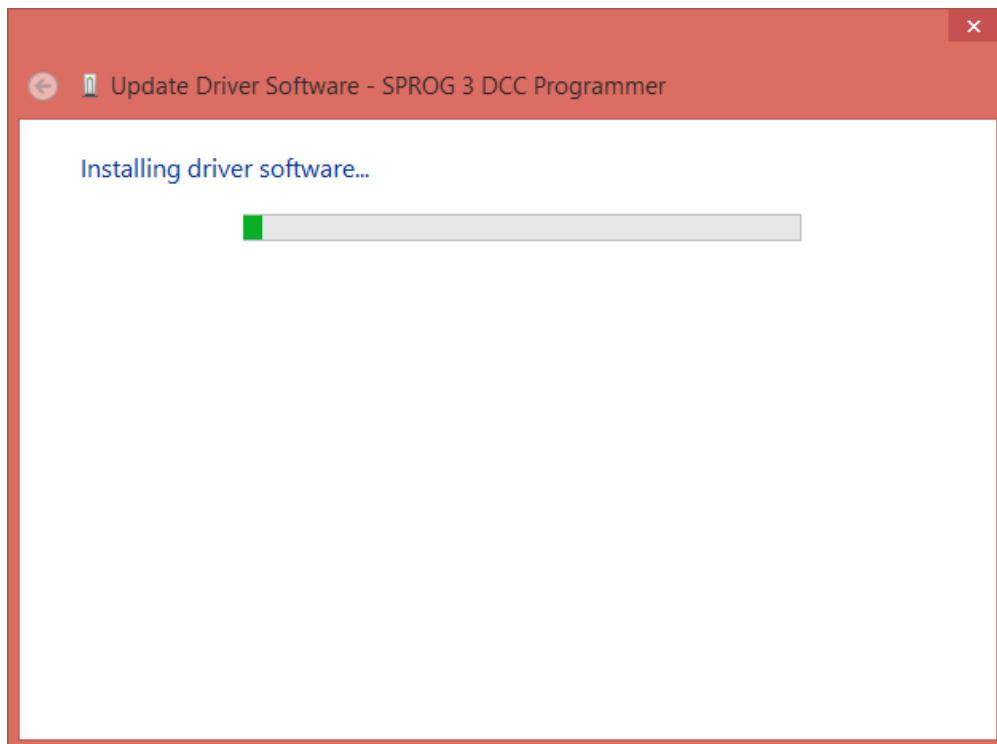


Browse to the directory containing the drivers. On the CD-ROM this will be the USB\<<sprog type> directory, e.g. USB\sprog3. Click "Next":

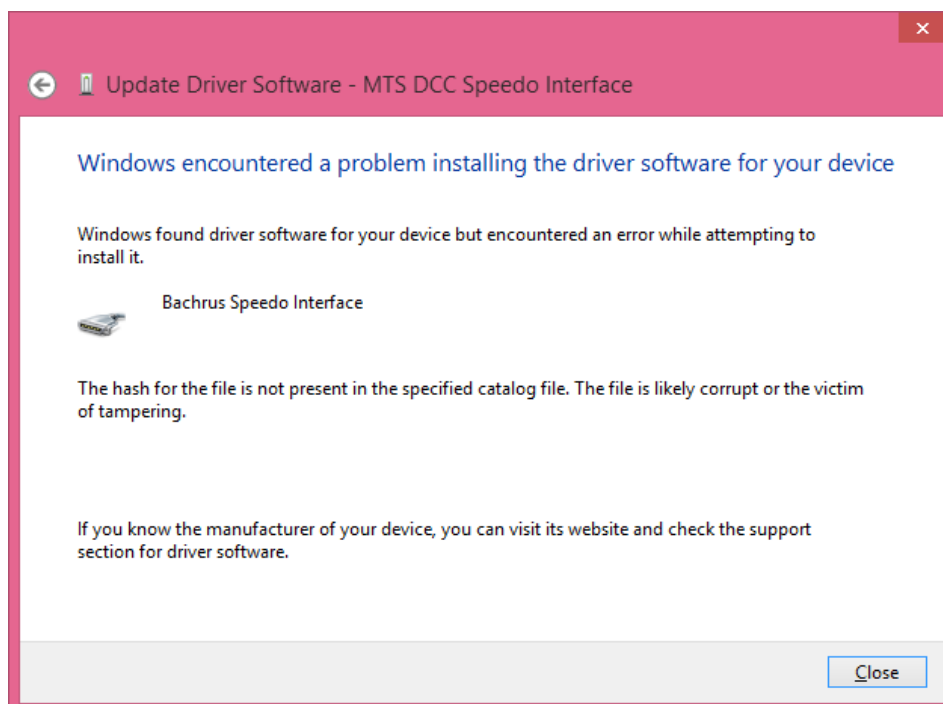




The installation will begin:



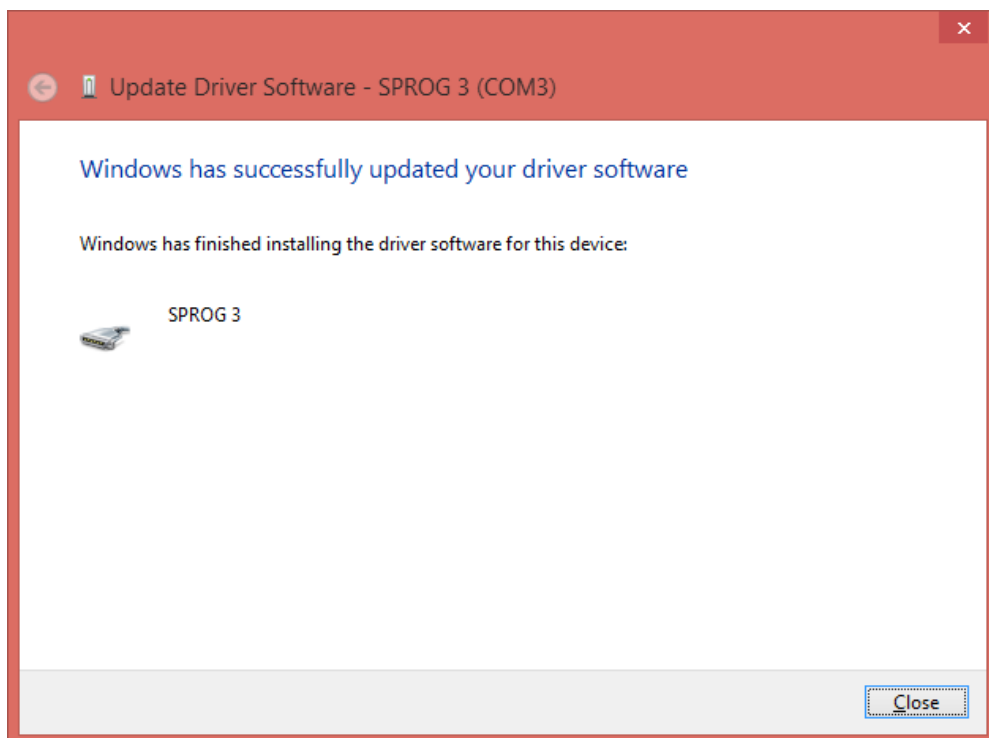
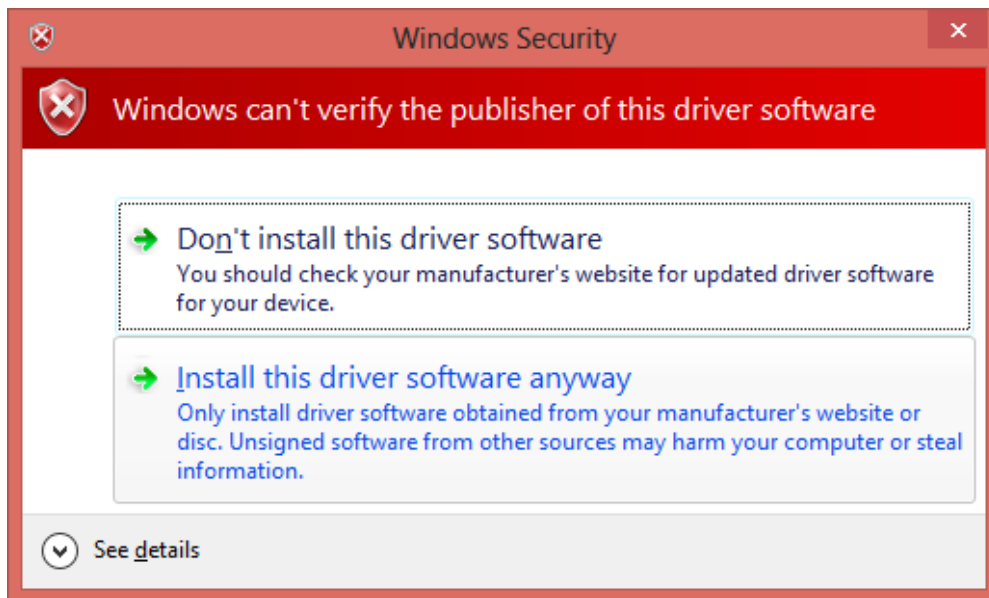
If you see the error message on Windows 8 or 8.1:



This indicates that you have not successfully disabled the driver signing and you should repeat the steps to do so.

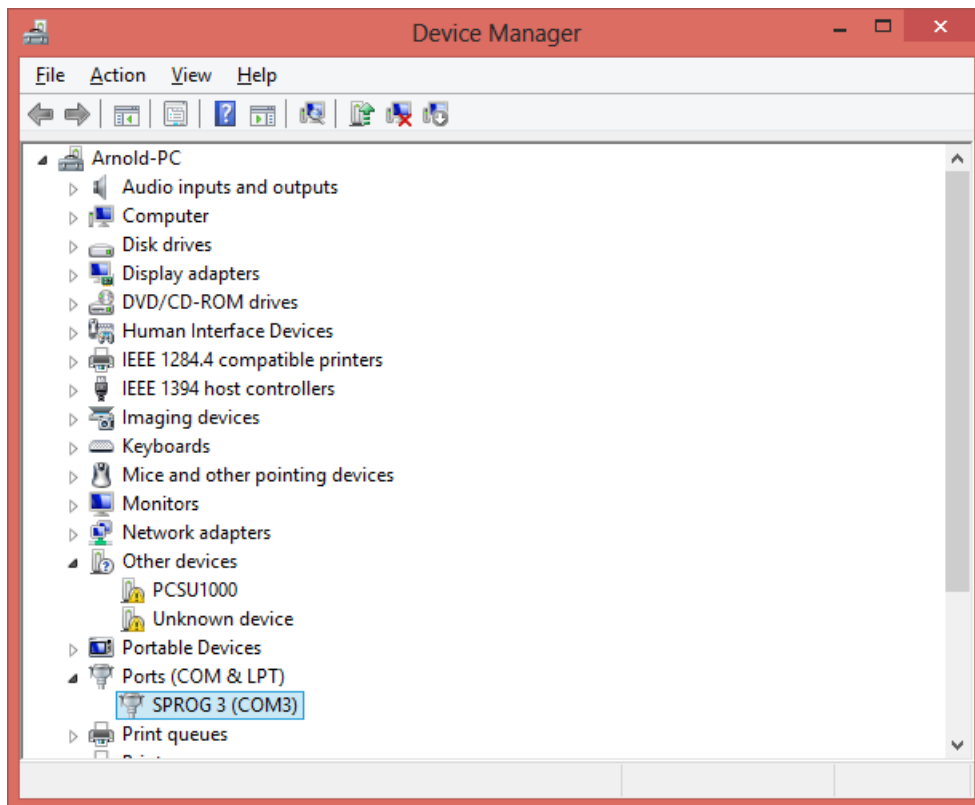
Windows will complain that the driver is unsigned:

Click “Install this driver software anyway...”



Your driver is now installed.

Note the COM port to be used in the DecoderPro preferences (COM3 in this example):



## Section 4 Older Generation SPROG II (Not SPROG IIv3, nor SPROG 3)

Older generation SPROG II use FTDI drivers, for which installation is a two-step process.

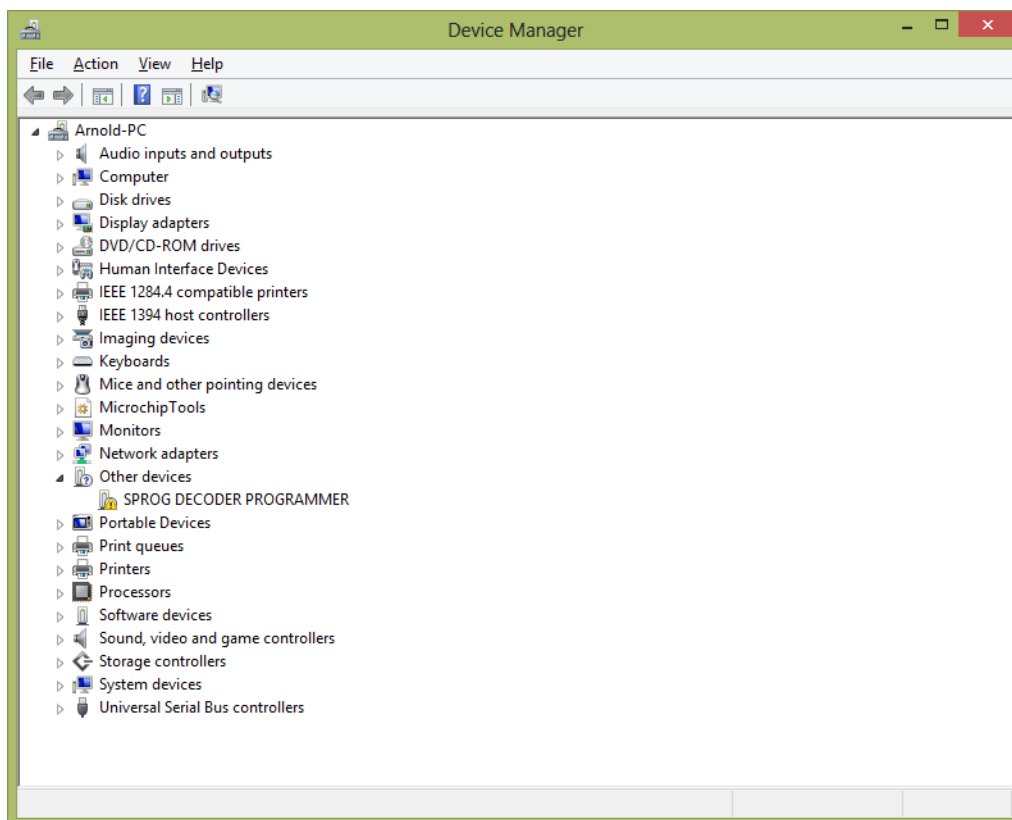
You should download the drivers from the SPROG DCC website

[http://www.sprog-dcc.co.uk/downloads/Windows\\_2000\\_XP\\_Vista\\_7.zip](http://www.sprog-dcc.co.uk/downloads/Windows_2000_XP_Vista_7.zip)

as the ones on the original CD-ROM may now be out of date.

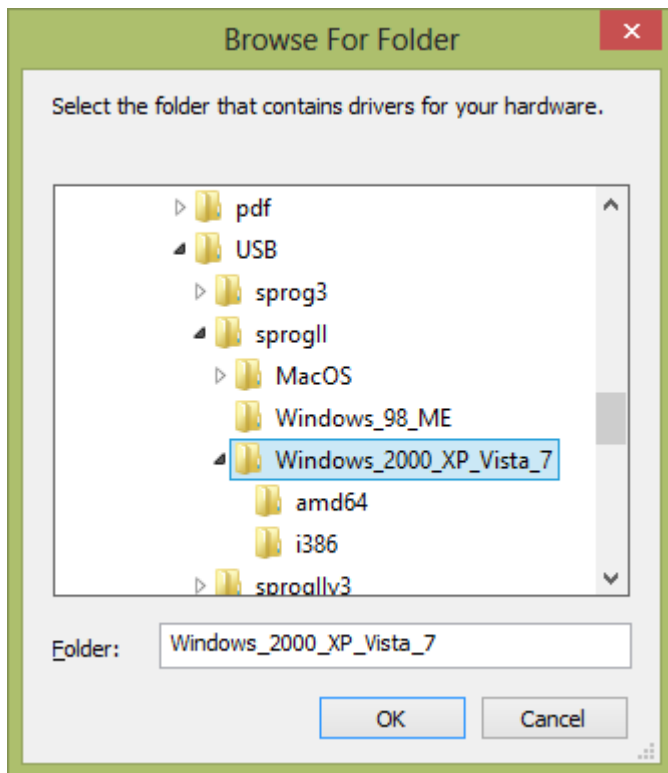
Unzip the downloaded file.

Open “Other Devices” and you will see the SPROG listed with a yellow exclamation mark:

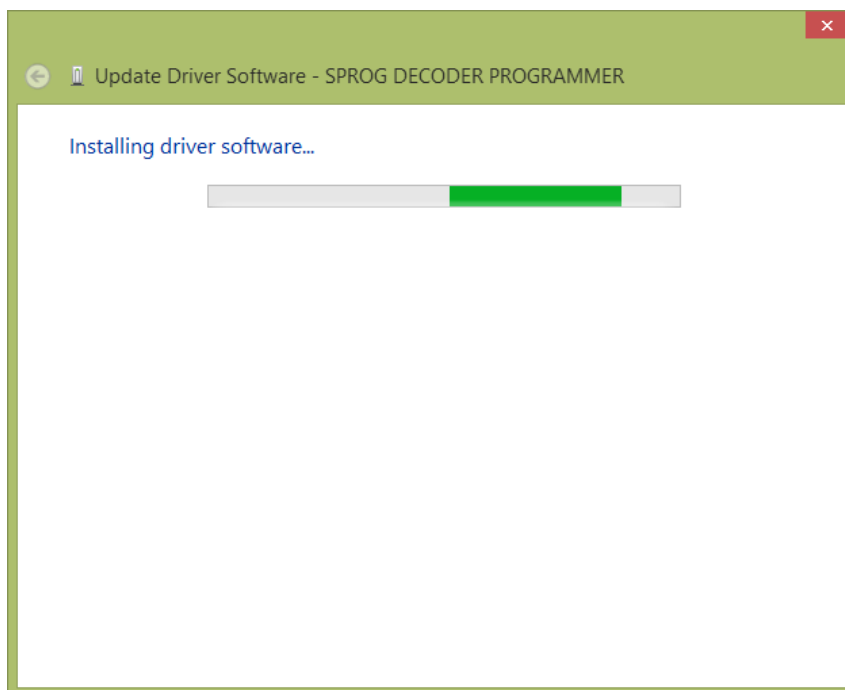


Click the SPROG device with the right mouse key and select “Update Driver Software...”.

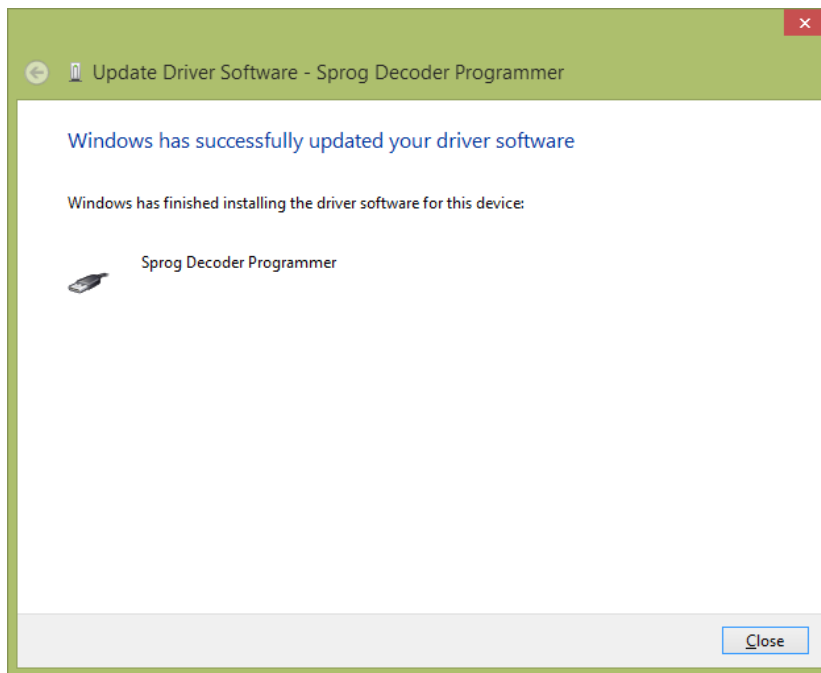
Browse to the folder where you unzipped the downloaded drivers.



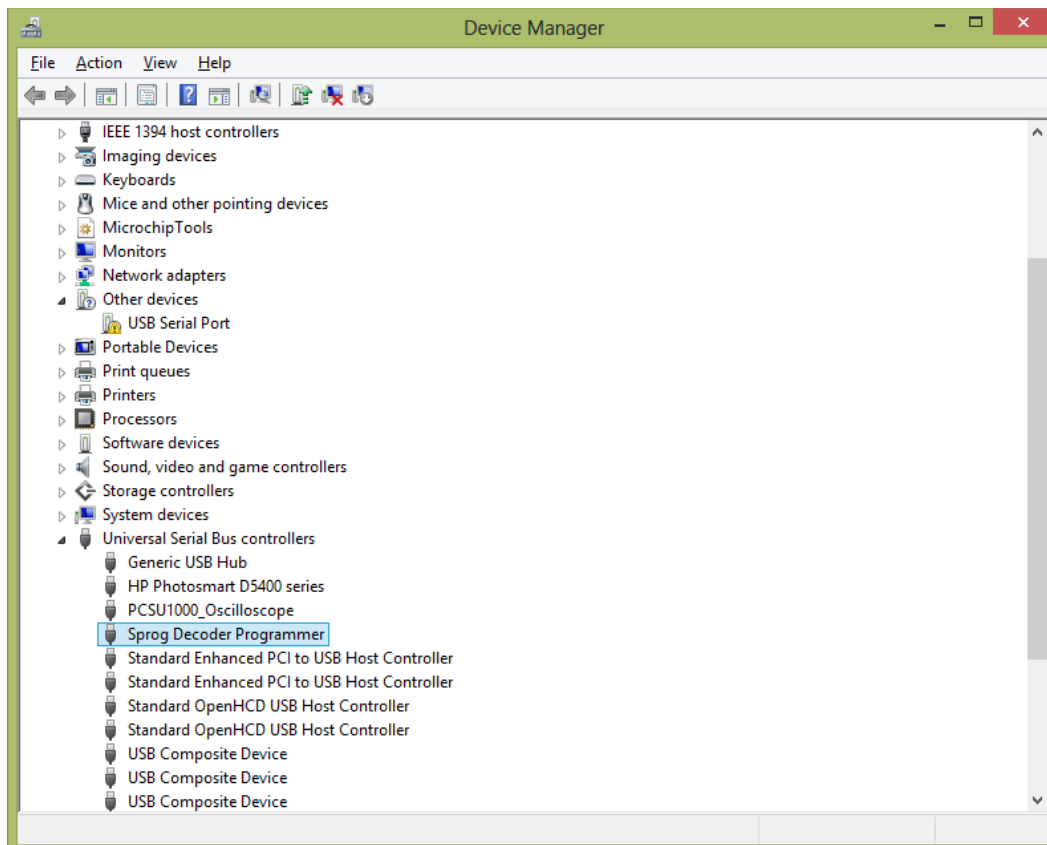
Click OK and the drivers will begin installing.



After a little while the first step will complete:



Look in the device manager again and you should see USB serial Port listed under other devices and the SPROG under Universal Serial Bus controllers.



Right click on USB Serial Port and update the drivers as in the previous step, using the same downloaded driver files.

When this second step is complete, the SPROG will be listed under Ports (COM & LPT). Note the COM port assignment for use in the DecoderPro preferences (COM5 in this example):

